

LUO GO E SE GNI



FAMILY GUIDE

PUNTA DELLA DOGANA
PALAZZO GRASSI

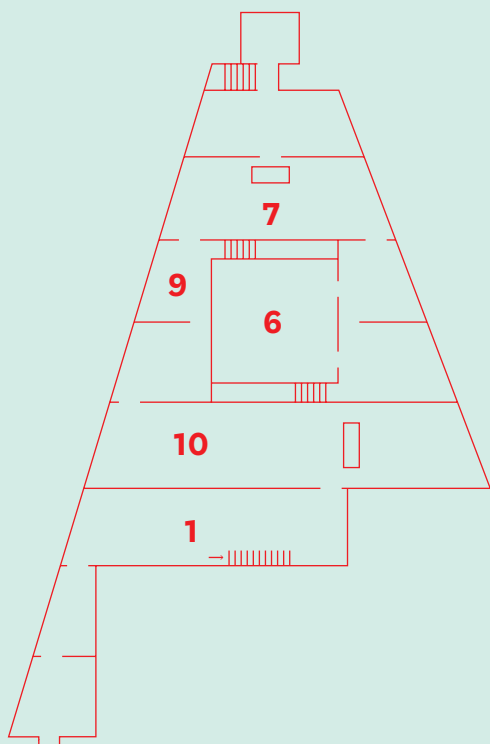
PINAULT
COLLECTION

TO MAKE THE MOST OF YOUR VISIT:

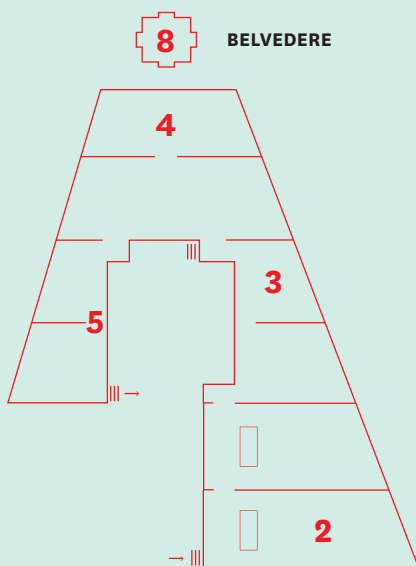
- WHEN YOU ENTER A ROOM,
WALK AROUND SLOWLY AND
LOOK AT ALL THE WORKS OF ART
- YOU CAN EVEN SIT ON THE FLOOR
AND **LOOK AROUND AT YOUR
LEISURE**
- ANY QUESTIONS? YOU'LL FIND
LOTS OF INFORMATION IN THE
EXHIBITION BROCHURE AND APP.
AND (ON SATURDAYS, SUNDAYS
AND MONDAYS) **JUST ASK OUR
CULTURAL MEDIATORS!**
- YOU'RE IN A SPECIAL PLACE:
DON'T FORGET TO **LOOK OUT THE
WINDOWS!**
- NO NEED TO RUSH TO SEE
EVERYTHING: **TAKE YOUR TIME**
- BUT ABOVE ALL... **HAVE FUN!**

WE'VE DESIGNED A SPECIAL TOUR FOR YOU:
FOLLOW THE NUMBERS ON THE PUNTA
DELLA DOGANA MAPS TO DISCOVER ALL THE
EXHIBITION'S SECRETS.

GROUND FLOOR



FIRST FLOOR



THE EXHIBITION TAKES ITS NAME FROM THIS WORK BY **CAROL RAMA**, CALLED **LUOGO E SEGNI** ("PLACE AND SIGNS"). IT COULD BE A MYSTERIOUS MAP OR A PUZZLE...
WHAT DOES IT LOOK LIKE TO YOU?
DO YOU RECOGNISE THE STRIPE ACROSS THE CANVAS?



CAN YOU FIND IT?
WRITE THE ROOM IT'S IN BELOW.

→ 1

The red-and-white beaded curtain, by artist **Felix Gonzalez-Torres**, is meant to symbolise blood, with its red and white cells. Visitors enter the exhibition – and, so to speak, the author’s body – through this curtain.

10

THIS CURTAIN IS AN IMPORTANT WORK FOR THIS MUSEUM: IT HAS BEEN DISPLAYED IN SEVERAL EXHIBITIONS OVER THE YEARS, AND ENJOYS A SPECIAL PLACE THIS YEAR – THE **10th** ANNIVERSARY OF THE OPENING OF PUNTA DELLA DOGANA.

TRY AND LIST THE **4** MAIN COMPONENTS OF BLOOD

4

3

PASS THROUGH THE CURTAIN SLOWLY **3** TIMES, WITH YOUR EYES OPEN, THEN CLOSED. LISTEN CAREFULLY TO YOUR FEELINGS AND **WRITE WHAT CROSSES YOUR MIND BELOW:**

→ 2

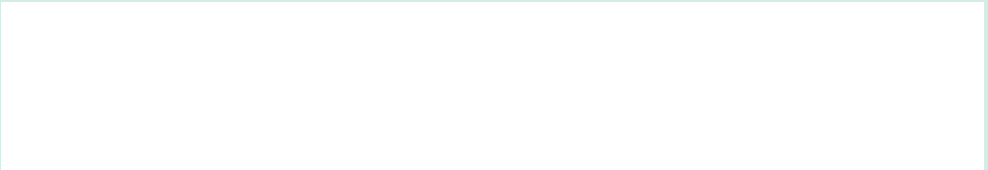
Here everything revolves around **light**: reflecting and iridescent materials make a visit to this room ever changing, based on the light filtering through the windows. So what you see today won't be what visitors will see tomorrow or two months from now!

RECORD TODAY'S CONDITIONS TO REMEMBER THEM, JUST LIKE SCIENTISTS DO:

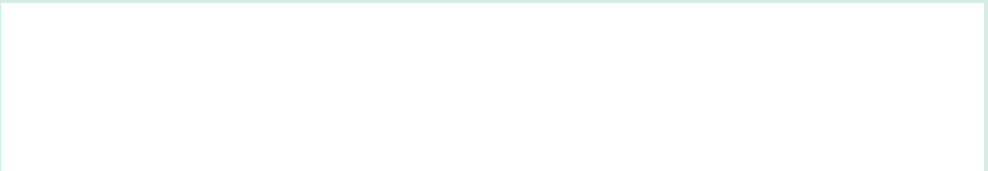
WHAT'S THE WEATHER LIKE?



WHICH WORK CONVEYS A SENSE OF WARMTH?



WHICH WORK FEELS THE COLDEST TO YOU?



WHAT OBJECTS REFLECT LIGHT IN YOUR EVERYDAY LIFE?
WHEN YOU GET HOME, TRY AND MAKE A COLLAGE OUT OF THEM ON THICK CARDBOARD.

WHEN YOU EXIT THE ROOM, LOOK CAREFULLY AT THE TWO CHAIRS. YOU'LL NEED THESE WORKS BY TATIANA TROUVÉ FOR ACTIVITY 7! **WRITE DOWN THE TITLE HERE:**

→ 3

It feels like some things are impossible to trap: just think of atmospheric phenomena or feelings and emotions.

But artists can do it! For example, **Charbel-joseph H. Boutros** managed to trap the night of a certain day and in a certain part of the world, in a small marble box. He even managed to capture a ray of Beirut sunlight on a piece of paper.

LOOKING AT THIS BALLOON, **TRY AND FIGURE OUT WHAT BOUTROS AND HIS ARTIST-COMPANION, STÉPHANIE SAADÉ, IMPRISONED:**

WHAT WOULD YOU LIKE TO CAPTURE?
JOY, FEAR OR SOMETHING ELSE? AND WHERE?

WRITE OR DRAW YOUR IDEAS BELOW



→ 4

The water surrounding Punta della Dogana has entered the museum! **Nina Canell**'s work of art is made up of sandstone slabs with water poured over them; being contained in a hydrophobic substance*, it doesn't flow away.

CHOOSE A SLAB AND **SKETCH WHAT YOU FIND REFLECTED ON IT BELOW**



NOW LOOK OUT THE WINDOW, **AND SKETCH WHAT YOU SEE REFLECTED IN THE CANAL WATERS**



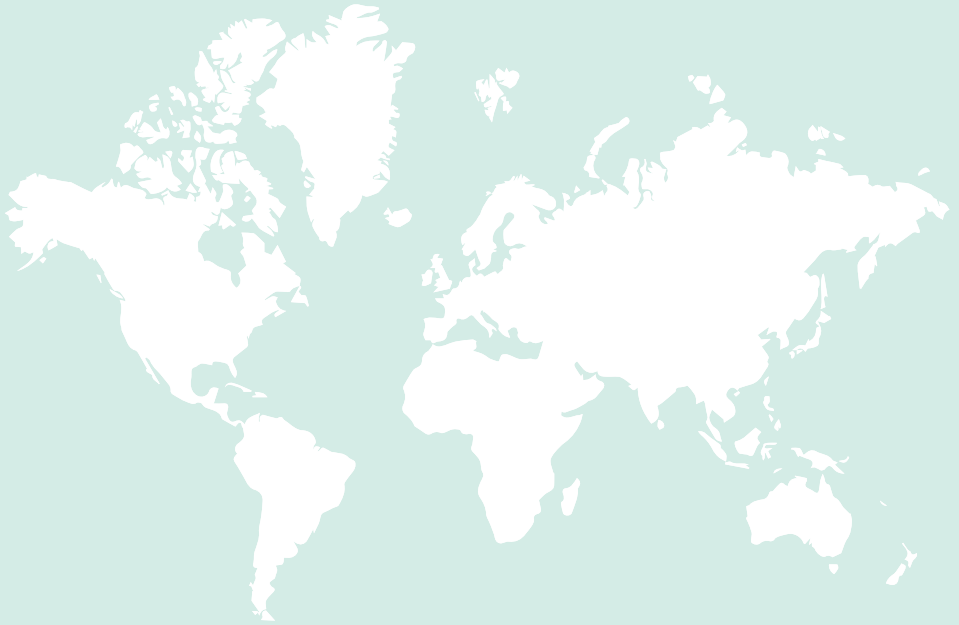
*The word "hydrophobic" comes from the Greek, and it's made up of *hydros* (water) and *phobia* (fear).

→ 5

These two rooms take us on a journey around the world.

The planet's winds have sculpted **Alessandro Piangiamore's** blocks of soil and oil painting fixes the horizon on canvas for **Lucas Arruda**, while wood from the four corners of the earth speak of **Stéphanie Saadé's** cardinal points.

BUT TELL US ABOUT YOURSELVES: WHAT ARE YOUR SPECIAL PLACES, THE ONES THAT MAKE UP YOUR STORIES? PIN-POINT THEM ON THE MAP AND TELL US WHAT THEY MEAN TO YOU



TIME FOR A CHALLENGE! WHAT OBJECT OR ELEMENT WOULD YOU USE TO DESCRIBE YOUR FAVOURITE PLACE?

DRAW AND CAPTION IT HERE:



→ 6

This work by **Roni Horn** is made up of various elements. Stroll around and take a close look at everything, then try and answer these questions:

WHAT DO YOU THINK THEY ARE?

HOW MANY ARE THERE?

HOW MANY SHADES OF BLUE DO YOU RECOGNISE?

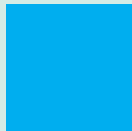
HERE'S A LIST; YOU MIGHT RECOGNISE SOME IN THIS WORK OF ART, TOO!



baby blue



ultramarine



cyan



aquamarine



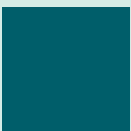
dusty blue



midnight blue



cerulean



peacock blue



navy blue



cobalt blue



prussian blue



indigo



azure



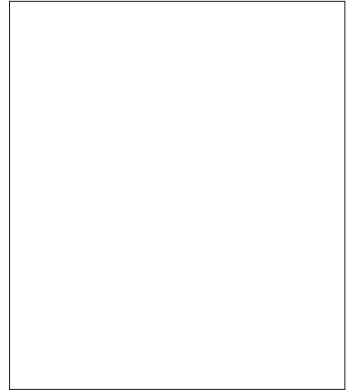
turquoise

→ 7

Remember **Tatiana Trouvé**'s works called *The Guardian*? You saw them on the first floor, right after activity 2. They represent the job of museum attendant, or guardian. We have some attendants here, too: they're dressed in black and wearing name tags. Their job is to watch over the artwork and visitors. These are the people that spend the most time with the works of art on display, watching them.

LET'S INTERVIEW THEM!
YOU COULD ASK ABOUT THEIR FAVOURITE ROOM OR WORK OF ART, OR WHICH WINDOW THEY LIKE TO LOOK OUT.

BELOW, YOU CAN FILL IN AN ID CARD FOR THE MUSEUM ATTENDANT YOU INTERVIEW.



NAME _____

HE/SHE COMES FROM _____

_____ ?

_____ ?

→ 8

Now that you've made it up here, look for the caption for **Wu Tsang's** work: the title recalls one of the artists that welcomed you to Punta della Dogana. Can you guess which work of art we're talking about?

LOOK AROUND: PUNTA DELLA DOGANA IS EMBRACED BY WATER AND BY VENICE ITSELF...
A SPECIAL, ONE-OF-A-KIND PLACE.

TAKE THE TIME TO OBSERVE AND LISTEN:

WHAT'S THE LIGHT LIKE?

WHAT SOUNDS DO YOU HEAR FROM THE WINDOWS?

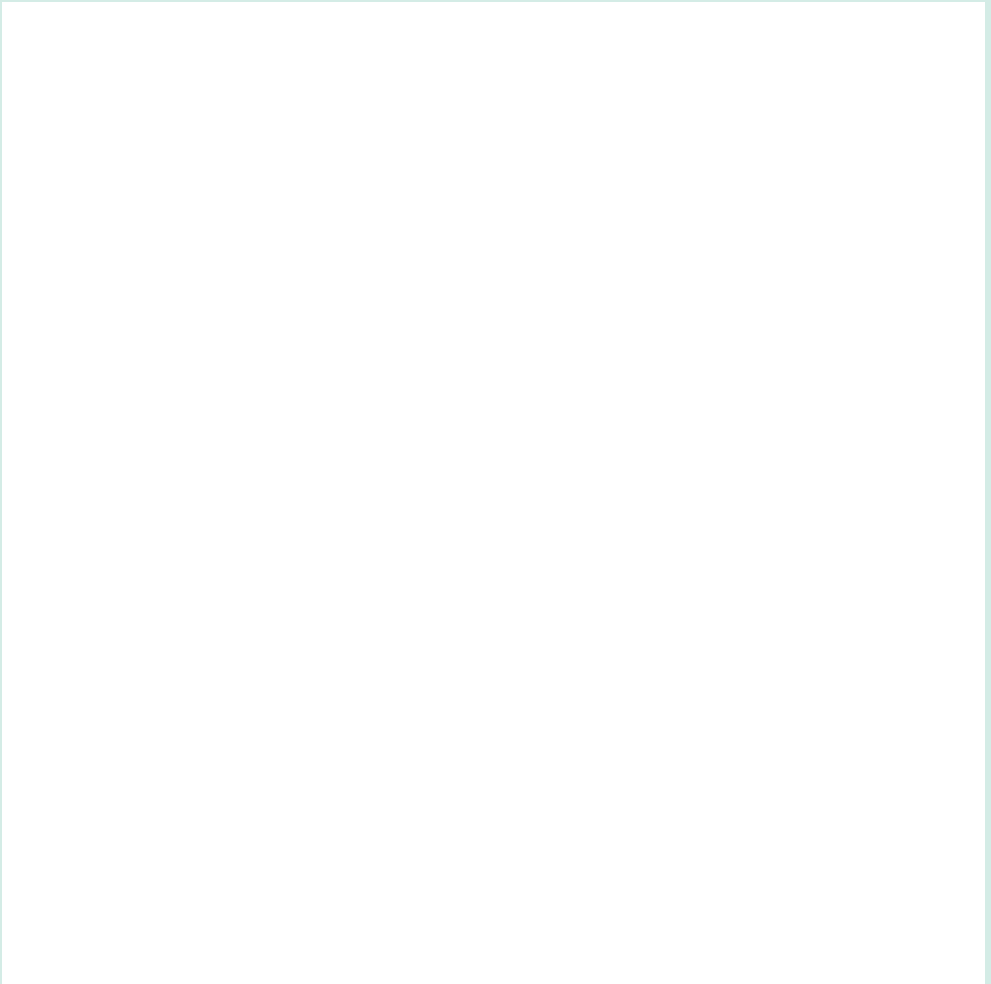
WHAT IS THE TRAFFIC OF VENICE MADE OF?

WU TSANG'S ARTWORK ALSO "SPEAKS" TO **FELIX GONZALEZ-TORRES'**. ANOTHER CURTAIN, MADE OF NON-VALUABLE MATERIAL, IT PLAYS WITH THE LIGHT AND REFLECTIONS ON WATER, CHANGING ITS EXPRESSION ACCORDING TO WEATHER AND LIGHT.

→ 9

In the words of poetess **Etel Adnan**, writing is drawing. How many kinds of writing do you know of? At school we're taught to use cursive, block letters, capital and lower-case letters...

TRY A CREATIVE EXPERIMENT BELOW: **THINK OF A WORD AND WRITE IT IN DIFFERENT SIZES AND HANDWRITINGS UNTIL YOU'VE FILLED THE WHOLE SPACE**



→ 10

Now concentrate – what do you smell?

It's the fragrance of the jasmine in the terrariums, but everything is backwards in this room: you usually smell *cestrum nocturnum* by night, not by day! Artist **Hicham Berrada** has built an upside-down greenhouse: it's dark during the day and bright at night, allowing us to be enveloped by the night-time fragrance of jasmine blossoms.

DO YOU HAVE A FAVOURITE SCENT?

WRITE OR DRAW IT HERE, AND TELL US WHY YOU LIKE IT

THIS GUIDE BELONGS TO:

Further information:
education@palazzograssi.it